

SHARP  
SERIES

*Digital*  
**iMAGER™**  
Advanced Workgroup System

AR-Ⓟ 350/450

connectivity



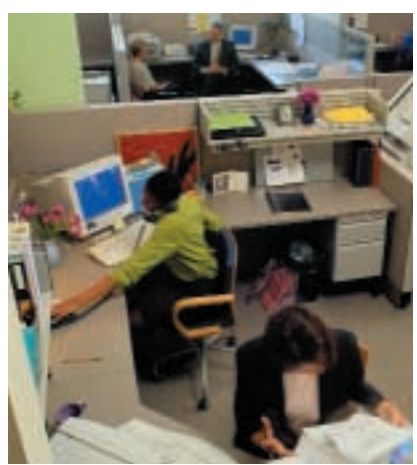
**Introducing the Sharp AR-P350/450 Digital Imager Advanced Modular Printers**

**Take your printing to a whole new level.** Welcome to the age of power printing, with the new Sharp AR-P350/450 advanced Digital Imager.

Created to serve the needs of an entire workgroup or small business, this efficient

performer combines high capacity with broad capabilities. Fully modular, the AR-P350/450 Digital Imager delivers the flexibility to expand and enhance your capabilities to meet your changing business needs.

So you can start with the AR-P350/450 Digital Imager today—and expand it tomorrow by adding copying, scanning and faxing capabilities for true multifunctionality.



**The Sharp AR-P350/450 Digital Imager. A powerful blend of features, functionality and flexibility.**



## Crisp, Clear Image Quality

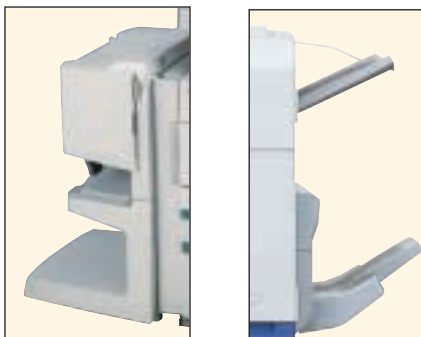
When it comes to efficient and high-quality printing, the Sharp AR-P350/450 Digital Imager is an easy decision. Offering 256 shades of grayscale and 600 dpi resolution—enhanced to the equivalent of 1,200 dpi with smoothing technology—the advanced Imager provides ultra crisp text and incredibly detailed images. All at an impressive 35 pages per minute for the AR-P350 Imager or 45 pages per minute with the AR-P450 Imager. And with a paper capacity of up to 3,100 pages, this powerful workhorse can efficiently handle larger volumes, too.

As flexible as it is functional, the AR-P350/450 Digital Imager also offers a number of image editing options, including the ability to shift margins, insert overlays, add watermarks, and

automatically resize documents to fit the page they're being printed on.



*Paper trays provide flexibility for different print media.*



*A choice of two optional finishers provide added functionality with features including saddle-stitch, stapler, and hole punch.*

## Productivity-Enhancing Possibilities

Beyond all the speed and quality you would expect from an advanced digital printer, the Sharp AR-P350/450 Digital Imager also delivers a surprising range of additional features.

One advantage is the ability to utilize special print media, such as overhead transparencies, envelopes and heavy stocks. So time and resources aren't wasted outsourcing special print jobs.

This versatile performer also allows users to hole punch and saddle stitch the same document, and the ability to support both saddle stitching and a mail bin stacker. And because many of these features are modular, the Imager can deliver exactly the capabilities you need today, along with the ability to upgrade tomorrow.



*Mail bin sorter includes a tray for copy, print and fax output. Seven additional trays provide designated print output areas for individual users.*

## Networking That Works For You

With Sharp's proprietary *Printer Status Monitor* software, users can monitor print conditions right from their desktops. And, for Network Administrators, Sharp's proprietary *Administrative Suite* software even delivers the ability to monitor and manage the system either remotely or automatically and to track printing usage for cost accounting—all with a few simple keystrokes.

Connected and highly versatile, the Sharp AR-P350/450 Digital Imager offers all the features, functionality and flexibility your business needs to take your printing to a whole new level.

## AR-P350/450 Digital Imager Printing Capabilities

**Printer Administration Utility Software**  
Enables Network Administrators to monitor any SNMP-compliant printer on the network.

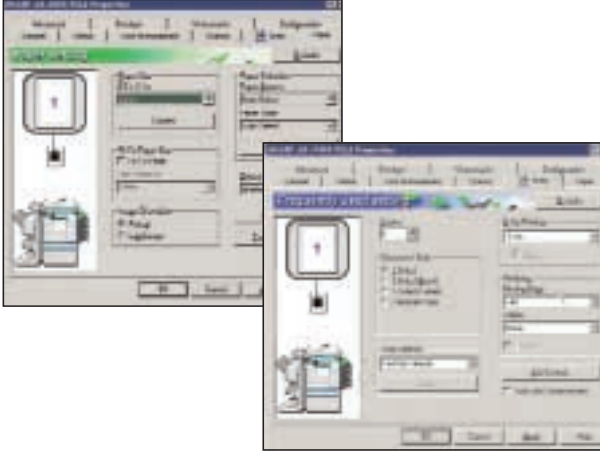


IP Address	Name	Location
172.16.1.1	Sharp P350	4000 Main St. - 10000000
172.16.1.2	Sharp P450	4000 Main St. - 10000000
172.16.1.3	Sharp P350	4000 Main St. - 10000000
172.16.1.4	Sharp P450	4000 Main St. - 10000000
172.16.1.5	Sharp P350	4000 Main St. - 10000000
172.16.1.6	Sharp P450	4000 Main St. - 10000000
172.16.1.7	Sharp P350	4000 Main St. - 10000000
172.16.1.8	Sharp P450	4000 Main St. - 10000000
172.16.1.9	Sharp P350	4000 Main St. - 10000000
172.16.1.10	Sharp P450	4000 Main St. - 10000000

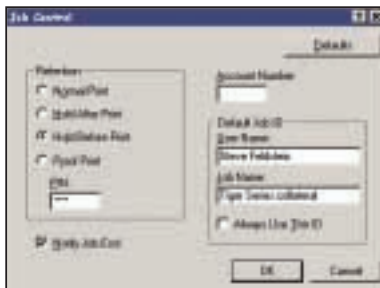
**Printer Status Monitor**  
An application which enables users to view network printer conditions through an easy-to-use graphical interface. It even notifies you when your job is complete!



## PCL5e/PCL6 Print Drivers



## Job Control Screen



◀ With the optional 5GB Hard Disk Drive installed, the following Job Control features are enabled — Print Hold, Confidential (PIN) Print, and Proof Print, allowing you to manage document output from the control panel.

# a t a g l a n c e

## Highlights:

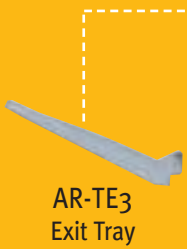
- *Job Retention functions\* (hold print/sample print/confidential print) allow you to control printout from the control panel*
- *1,200 dpi equivalent resolution with smoothing technology*
- *Compatible with PCL5e/6 (standard) and PostScript Level 3 (option)*
- *Multi-Purpose Paper Tray handles special print media including envelopes, overhead transparencies, heavy stocks and other non-standard paper types*
- *Various image editing functions: Margin-Shift, Overlays, Watermarks, Fit to Page, etc.*
- *Optional large-capacity HDD*
- *Sharp Status Monitor software lets you monitor printer activities*
- *Duplex printing capability*
- *Toner Save mode*
- *Optional Saddle-Stitch Finisher*
  - *Optional 2/3 hole punch unit to expand your finishing capabilities*
  - *Automatically V-folds*
  - *Ability to hole punch and saddle-stitch same document*
- *Optional Mail Bin Sorter*

\*Requires optional hard disk drive



# Accessory Options

AR-P450



AR-TE3  
Exit Tray



AR-DU3  
Duplex Module



AR-DU4  
Duplex Module  
with Bypass Tray



AR-MS1  
Mail Bin Stacker



AR-TE4  
Upper Exit Tray  
Expansion



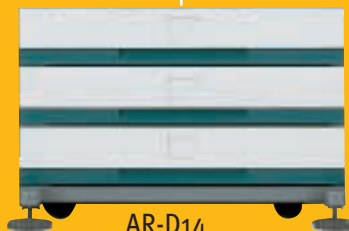
AR-FN7  
Saddle Stitch Finisher



AR-FN6  
Stapler/Sorter Finisher



AR-MU1  
500-Sheet Multi-Purpose Drawer



AR-D14  
Stand with Three  
500-Sheet Paper Drawers



AR-D13  
Stand with Multi-Purpose Drawer  
and 2000-Sheet Drawer

# AR-(P) 350/450

## General

<b>Type:</b>	Console
<b>Copy system:</b>	Dry, electrostatic transfer system
<b>Paper size:</b>	Max. 11" x 17" / Min. 5.5" x 8.5"
<b>Paper capacity:</b>	500 sheets, expandable up to 3,100 sheets with options
<b>Copy/print speed (max):</b>	35/45 cpm/ppm (8.5" x 11")
<b>Memory:</b>	32MB, upgradable to 288MB with options, 5GB HDD
<b>Warm-up time<sup>1</sup>:</b>	Less than 80 seconds
<b>Power requirements:</b>	Rated local AC voltage $\pm$ 10%, 50/60 Hz
<b>Power consumption:</b>	Max. 1.53 kW
<b>Dimensions (WxDxH):</b>	25 3/4" x 22 21/64" x 23 11/32"
<b>Weight:</b>	Approx. 50 kg (110.3 lbs)

## Printer

<b>Resolution:</b>	600 dpi, 1,200 dpi equivalent with smoothing technology
<b>Interface:</b>	IEEE 1284 parallel port
<b>Printer drivers:</b>	Windows® 95/98/Me, Windows NT® 4.0, Macintosh System 8.5.1-9x
<b>PDL:</b>	PCL5e, PCL6, Emulated PostScript Level 3 (option)
<b>Available fonts:</b>	45 fonts for HP PCL, 136 fonts for PS (with optional AR-PK1)
<b>Other features:</b>	Paper/output tray selection, duplex print, watermarks, pamphlet style, staple (3 patterns), job retention for confidential sample print, N-up, B&W reverse, mirror image, form overlay, fit to page, auto configuration, easy print (stores settings), confidential print, sample print. Note: some features are not available according to the printer driver used.

## Print Server Card (optional AR-NC5J)

<b>Hardware interface:</b>	10Base-T, 100Base-TX
<b>Support platforms:</b>	UNIX, Windows 95/98/Me, Windows NT 4.0, Windows 2000, Novell Netware 3.x/4.x (IntranetWare)/Netware5, Macintosh System 8.5.1-9.x
<b>Network protocols:</b>	IPX/SPX for Novell environments, TCP/IP for Windows and UNIX environments, EtherTalk for Macintosh environments
<b>Printing protocols:</b>	Novell Printserver Application w/ NCS and Bindery, Printer resident LPD (includes reaction to LPQ request), TCP FTP for downloading of print files, Ethertalk printing, IPP, NetBEUI for Windows

Design and specifications are subject to change without notice.  
Sharp is a registered trademark of Sharp Corporation.  
All trademarks and registered trademarks are of their respective holders.  
<sup>1</sup>At rated voltage, 20°C (68°F), 65% RH.

# SHARP®

SHARP ELECTRONICS CORPORATION  
Network Office Systems Group • Sharp Plaza, Mahwah, NJ 07430-2135  
1-800-BE-SHARP • www.sharp-usa.com



As an ENERGY STAR® Partner, SHARP has determined that this product meets the ENERGY STAR® guidelines for energy efficiency.